

# Lumican (YD19738) Rabbit mAb

货号: **AYD14459**

## 产品信息

反应	Human,Mouse,Rat
宿主	Rabbit
克隆性	Monoclonal
预测反应	
应用	WB IHC-P IP
推荐浓度	
理论分子量	38kDa
实测分子量	
形式	Liquid
保存条件	Store at -20°C. Avoid freeze / thaw cycles. Buffer: PBS with 0.75% BSA,50% glycerol,pH7.3.
偶联物	Unconjugated
阳性对照	A-549,HepG2,Mouse heart,Mouse lung,Rat heart,Rat lung
细胞定位	Secreted, extracellular space, extracellular matrix
纯化	

## 抗原信息

抗原信息	
------	--

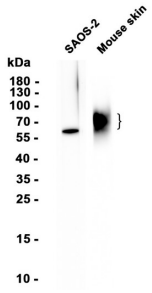
## 靶点信息

研究背景	This gene encodes a member of the small leucine-rich proteoglycan (SLRP) family that includes decorin, biglycan, fibromodulin, keratan, epiphykan, and osteoglycin. In these bifunctional molecules, the protein moiety binds collagen fibrils and the highly charged hydrophilic glycosaminoglycans regulate interfibrillar spacings. Lumican is the major keratan sulfate proteoglycan of the cornea but is also distributed in interstitial collagenous matrices throughout the body. Lumican may regulate collagen fibril organization and circumferential growth, corneal transparency, and epithelial cell migration and tissue repair.
基因ID	4060
基因名	LUM

Swiss	P51884
别名	Lumican (YD19738)

## 产品验证

---



## 实验步骤

访问官网浏览详情: [www.ablybio.cn](http://www.ablybio.cn)