

Bag1 (YD20935) Rabbit mAb

货号: **AYD14435**

产品信息

反应	Human,Mouse,Rat
宿主	Rabbit
克隆性	Monoclonal
预测反应	
应用	WB IHC-P ICC/IF
推荐浓度	
理论分子量	39kDa
实测分子量	
形式	Liquid
保存条件	Store at -20°C. Avoid freeze / thaw cycles. Buffer: PBS with 0.75% BSA,50% glycerol,pH7.3.
偶联物	Unconjugated
阳性对照	SW620,Mouse kidney
细胞定位	Nucleus, Cytoplasm
纯化	

抗原信息

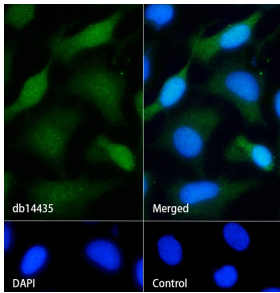
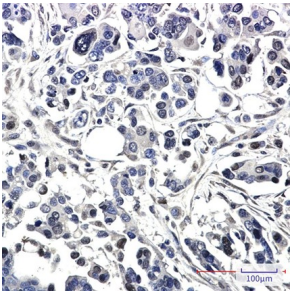
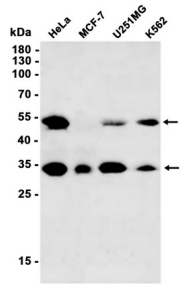
抗原信息	
------	--

靶点信息

研究背景	The oncogene BCL2 is a membrane protein that blocks a step in a pathway leading to apoptosis or programmed cell death. The protein encoded by this gene binds to BCL2 and is referred to as BCL2-associated antigen 1. It enhances the anti-apoptotic effects of BCL2 and represents a link between growth factor receptors and anti-apoptotic mechanisms. Multiple protein isoforms are encoded by this mRNA through the use of a non-AUG (CUG) initiation codon, and three alternative downstream AUG initiation codons. A related pseudogene has been defined on chromosome X.
基因ID	573
基因名	BAG1

Swiss	Q99933
别名	Bag1 (YD20935)

产品验证



实验步骤

访问官网浏览详情: www.ablybio.cn