

KIF1A (YD19910) Rabbit mAb

货号: **AYD14413**

产品信息

反应	Human,Rat
宿主	Rabbit
克隆性	Monoclonal
预测反应	
应用	WB ICC/IF FC IP
推荐浓度	
理论分子量	191kDa
实测分子量	
形式	Liquid
保存条件	Store at -20°C. Avoid freeze / thaw cycles. Buffer: PBS with 0.75% BSA,50% glycerol,pH7.3.
偶联物	Unconjugated
阳性对照	
细胞定位	Cytoplasm, cytoskeleton, Cell projection, neuron projection, axon, perinuclear region, Synapse, Cytoplasmic vesicle, secretory vesicle, neuronal dense core vesicle membrane
纯化	

抗原信息

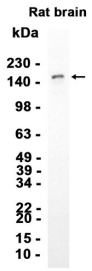
抗原信息	
------	--

靶点信息

研究背景	Kinesin motor with a plus-end-directed microtubule motor activity (By similarity). It is required for anterograde axonal transport of synaptic vesicle precursors (PubMed:33880452). Also required for neuronal dense core vesicles (DCVs) transport to the dendritic spines and axons. The interaction calcium-dependent with CALM1 increases vesicle motility and interaction with the scaffolding proteins PPFIA2 and TANC2 recruits DCVs to synaptic sites
基因ID	547
基因名	KIF1A
Swiss	Q12756

别名	KIF1A (YD19910)
----	-----------------

产品验证



实验步骤

访问官网浏览详情: www.ablybio.cn