

Phospho-KIF22 (Ser427) (YD12831) Rabbit mAb

货号: **AYD14400**

产品信息

反应	Human
宿主	Rabbit
克隆性	Monoclonal
预测反应	
应用	WB
推荐浓度	
理论分子量	73kDa
实测分子量	
形式	Liquid
保存条件	Store at -20°C. Avoid freeze / thaw cycles. Buffer: PBS with 0.75% BSA,50% glycerol,pH7.3.
偶联物	Unconjugated
阳性对照	293T
细胞定位	Nucleus, Cytoplasm, cytoskeleton
纯化	

抗原信息

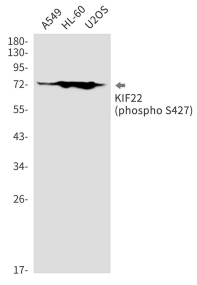
抗原信息	
------	--

靶点信息

研究背景	The protein encoded by this gene is a member of the kinesin-like protein family. The family members are microtubule-dependent molecular motors that transport organelles within cells and move chromosomes during cell division. The C-terminal half of this protein has been shown to bind DNA. Studies with the Xenopus homolog suggests its essential role in metaphase chromosome alignment and maintenance. Alternatively spliced transcript variants encoding different isoforms have been found for this gene.
基因ID	3835
基因名	KIF22
Swiss	Q14807

别名	Phospho-KIF22 (Ser427) (YD12831)
----	----------------------------------

产品验证



实验步骤

访问官网浏览详情: www.ablybio.cn