

Bcl-XL (YD31954) Rabbit mAb

货号: **AYD14392**

产品信息

反应	Human,Mouse,Rat
宿主	Rabbit
克隆性	Monoclonal
预测反应	
应用	WB IHC-P IP
推荐浓度	
理论分子量	26kDa
实测分子量	
形式	Liquid
保存条件	Store at -20°C. Avoid freeze / thaw cycles. Buffer: PBS with 0.75% BSA,50% glycerol,pH7.3.
偶联物	Unconjugated
阳性对照	OVCAR3,Rat lung,Rat spleen
细胞定位	Mitochondrion inner membrane, Mitochondrion outer membrane, Mitochondrion matrix, Cytoplasmic vesicle, secretory vesicle, synaptic vesicle membrane, Cytoplasm, cytosol, cytoskeleton, microtubule organizing center, centrosome, Nucleus membrane
纯化	

抗原信息

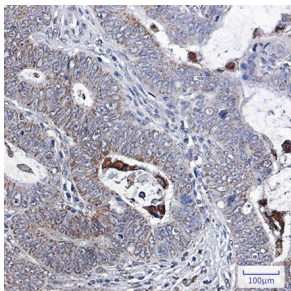
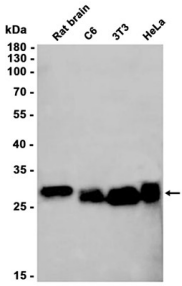
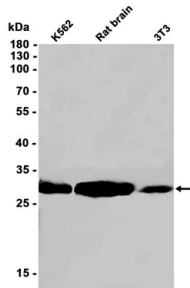
抗原信息	
------	--

靶点信息

研究背景	The protein encoded by this gene belongs to the BCL-2 protein family. BCL-2 family members form hetero- or homodimers and act as anti- or pro-apoptotic regulators that are involved in a wide variety of cellular activities. The proteins encoded by this gene are located at the outer mitochondrial membrane, and have been shown to regulate outer mitochondrial membrane channel (VDAC) opening. VDAC regulates mitochondrial membrane potential, and thus controls the production of reactive oxygen species and release of cytochrome C by mitochondria, both of which are the potent inducers of cell apoptosis. Alternative splicing results in multiple transcript variants encoding two different isoforms. The longer isoform acts as an apoptotic inhibitor and the shorter isoform acts as an apoptotic activator.
基因ID	598

基因名	BCL2L1
Swiss	Q07817
别名	Bcl-XL (YD31954)

产品验证



实验步骤

访问官网浏览详情: www.ablybio.cn