

EVPL (YD20030) Rabbit mAb

货号: **AYD14374**

产品信息

反应	Human
宿主	Rabbit
克隆性	Monoclonal
预测反应	
应用	WB IHC-P FC
推荐浓度	
理论分子量	232kDa
实测分子量	
形式	Liquid
保存条件	Store at -20°C. Avoid freeze / thaw cycles. Buffer: PBS with 0.75% BSA,50% glycerol,pH7.3.
偶联物	Unconjugated
阳性对照	HeLa,Mouse lung,Rat lung
细胞定位	Cell junction, desmosome, Cornified envelope, Cytoplasm, cytoskeleton
纯化	

抗原信息

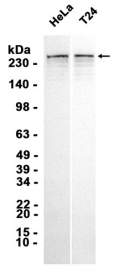
抗原信息	
------	--

靶点信息

研究背景	This gene encodes a member of the plakin family of proteins that forms a component of desmosomes and the epidermal cornified envelope. This gene is located in the tylosis oesophageal cancer locus on chromosome 17q25, and its deletion is associated with both familial and sporadic forms of oesophageal squamous cell carcinoma. Patients suffering from the autoimmune mucocutaneous disorder, paraneoplastic pemphigus, develop antibodies against the encoded protein.
基因ID	2125
基因名	EVPL
Swiss	Q92817

别名	EVPL (YD20030)
----	----------------

产品验证



实验步骤

访问官网浏览详情: www.ablybio.cn