

MAD1 (YD20101) Rabbit mAb

货号: **AYD14370**

产品信息

反应	Human
宿主	Rabbit
克隆性	Monoclonal
预测反应	
应用	WB IHC-P
推荐浓度	
理论分子量	83kDa
实测分子量	
形式	Liquid
保存条件	Store at -20°C. Avoid freeze / thaw cycles. Buffer: PBS with 0.75% BSA,50% glycerol,pH7.3.
偶联物	Unconjugated
阳性对照	HeLa,HepG2,MCF7
细胞定位	Nucleus, Chromosome, centromere, kinetochore, Nucleus envelope, Cytoplasm, cytoskeleton, microtubule organizing center, centrosome, spindle, spindle pole
纯化	

抗原信息

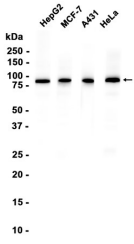
抗原信息	
------	--

靶点信息

研究背景	MAD1L1 is a component of the mitotic spindle-assembly checkpoint that prevents the onset of anaphase until all chromosome are properly aligned at the metaphase plate. MAD1L1 functions as a homodimer and interacts with MAD2L1. MAD1L1 may play a role in cell cycle control and tumor suppression. Alternative splicing results in multiple transcript variants.
基因ID	8379
基因名	MAD1L1
Swiss	Q9Y6D9

别名	MAD1 (YD20101)
----	----------------

产品验证



实验步骤

访问官网浏览详情: www.ablybio.cn