

EpCAM (YD14159) Rabbit mAb

货号: **AYD14338**

产品信息

反应	Human,Mouse,Rat
宿主	Rabbit
克隆性	Monoclonal
预测反应	
应用	WB IHC-P ICC/IF IP
推荐浓度	
理论分子量	35kDa
实测分子量	
形式	Liquid
保存条件	Store at -20°C. Avoid freeze / thaw cycles. Buffer: PBS with 0.75% BSA,50% glycerol,pH7.3.
偶联物	Unconjugated
阳性对照	HT-29,Mouse colon,Rat colon
细胞定位	Lateral cell membrane, Cell junction, tight junction
纯化	

抗原信息

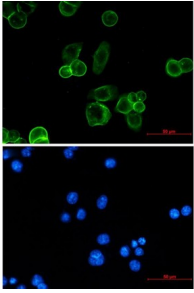
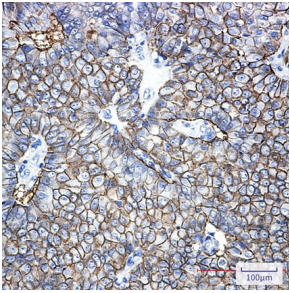
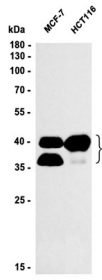
抗原信息	
------	--

靶点信息

研究背景	This gene encodes a carcinoma-associated antigen and is a member of a family that includes at least two type I membrane proteins. This antigen is expressed on most normal epithelial cells and gastrointestinal carcinomas and functions as a homotypic calcium-independent cell adhesion molecule. The antigen is being used as a target for immunotherapy treatment of human carcinomas. Mutations in this gene result in congenital tufting enteropathy.
基因ID	4072
基因名	EPCAM
Swiss	P16422

别名	EpCAM (YD14159)
----	-----------------

产品验证



实验步骤

访问官网浏览详情: www.ablybio.cn