

MEF2BNB (YD20355) Rabbit mAb

货号: **AYD14293**

产品信息

反应	Human,Mouse,Rat
宿主	Rabbit
克隆性	Monoclonal
预测反应	
应用	WB
推荐浓度	
理论分子量	13kDa
实测分子量	
形式	Liquid
保存条件	Store at -20°C. Avoid freeze / thaw cycles. Buffer: PBS with 0.75% BSA,50% glycerol,pH7.3.
偶联物	Unconjugated
阳性对照	
细胞定位	Lysosome membrane
纯化	

抗原信息

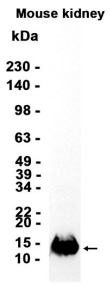
抗原信息	
------	--

靶点信息

研究背景	As part of the BLOC-one-related complex (BORC), it plays a role in the movement and localization of lysosomes at the cell periphery (PubMed:25898167, PubMed:38128568). Associated with the cytosolic face of lysosomes, BORC recruits ARL8B to the lysosomal membrane and couples lysosomes to microtubule plus-end-directed kinesin motors, driving lysosome movement toward the cell periphery
基因ID	729991
基因名	BORCS8
Swiss	Q96FH0

别名	MEF2BNB (YD20355)
----	-------------------

产品验证



实验步骤

访问官网浏览详情: www.ablybio.cn