

Sarcomeric Alpha Actinin (YD20423) Rabbit mAb

货号: **AYD14287**

产品信息

| | |
|-------|---|
| 反应 | Human,Mouse,Rat |
| 宿主 | Rabbit |
| 克隆性 | Monoclonal |
| 预测反应 | |
| 应用 | WB IHC-P |
| 推荐浓度 | |
| 理论分子量 | 104kDa |
| 实测分子量 | |
| 形式 | Liquid |
| 保存条件 | Store at -20°C. Avoid freeze / thaw cycles. Buffer: PBS with 0.75% BSA,50% glycerol,pH7.3. |
| 偶联物 | Unconjugated |
| 阳性对照 | SH-SY5Y,HT-29,HeLa,Mouse heart,Mouse skeletal muscle,Mouse lung,Rat liver,Rat heart |
| 细胞定位 | Cytoplasm, myofibril, sarcomere, Z line |
| 纯化 | |

抗原信息

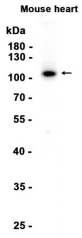
| | |
|------|--|
| 抗原信息 | |
|------|--|

靶点信息

| | |
|------|--|
| 研究背景 | Alpha actinins belong to the spectrin gene superfamily which represents a diverse group of cytoskeletal proteins, including the alpha and beta spectrins and dystrophins. Alpha actinin is an actin-binding protein with multiple roles in different cell types. In nonmuscle cells, the cytoskeletal isoform is found along microfilament bundles and adherens-type junctions, where it is involved in binding actin to the membrane. In contrast, skeletal, cardiac, and smooth muscle isoforms are localized to the Z-disc and analogous dense bodies, where they help anchor the myofibrillar actin filaments. This gene encodes a muscle-specific, alpha actinin isoform that is expressed in both skeletal and cardiac muscles. Several transcript variants encoding different isoforms have been found for this gene. |
| 基因ID | 88 |

| | |
|-------|------------------------------------|
| 基因名 | ACTN2 |
| Swiss | P35609 |
| 别名 | Sarcomeric Alpha Actinin (YD20423) |

产品验证



实验步骤

访问官网浏览详情: www.ablybio.cn