

Phospho-Phospholamban (Ser16) (YD20062) Rabbit mAb

货号: AYD14274

产品信息

反应	Human,Mouse
宿主	Rabbit
克隆性	Monoclonal
预测反应	
应用	WB
推荐浓度	
理论分子量	6kDa
实测分子量	
形式	Liquid
保存条件	Store at -20°C. Avoid freeze / thaw cycles. Buffer: PBS with 0.75% BSA,50% glycerol,pH7.3.
偶联物	Unconjugated
阳性对照	Mouse heart,Rat heart
细胞定位	Endoplasmic reticulum membrane, Sarcoplasmic reticulum membrane, Mitochondrion membrane, Membrane
纯化	

抗原信息

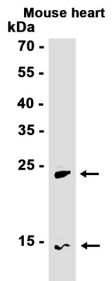
抗原信息	
------	--

靶点信息

研究背景	The protein encoded by this gene is found as a pentamer and is a major substrate for the cAMP-dependent protein kinase in cardiac muscle. The encoded protein is an inhibitor of cardiac muscle sarcoplasmic reticulum Ca(2+)-ATPase in the unphosphorylated state, but inhibition is relieved upon phosphorylation of the protein. The subsequent activation of the Ca(2+) pump leads to enhanced muscle relaxation rates, thereby contributing to the inotropic response elicited in heart by beta-agonists. The encoded protein is a key regulator of cardiac diastolic function. Mutations in this gene are a cause of inherited human dilated cardiomyopathy with refractory congestive heart failure, and also familial hypertrophic cardiomyopathy.
基因ID	5350

基因名	PLN
Swiss	P26678
别名	Phospho-Phospholamban (Ser16) (YD20062)

产品验证



实验步骤

访问官网浏览详情: www.ablybio.cn