

GCLC (YD20538) Rabbit mAb

货号: **AYD14254**

产品信息

反应	Human,Mouse,Rat
宿主	Rabbit
克隆性	Monoclonal
预测反应	
应用	WB IP
推荐浓度	
理论分子量	73kDa
实测分子量	
形式	Liquid
保存条件	Store at -20°C. Avoid freeze / thaw cycles. Buffer: PBS with 0.75% BSA,50% glycerol,pH7.3.
偶联物	Unconjugated
阳性对照	HepG2,Mouse kidney,Mouse liver,Mouse lung,Rat kidney,Rat liver
细胞定位	
纯化	

抗原信息

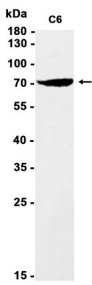
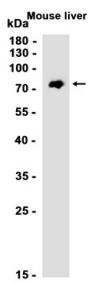
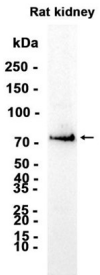
抗原信息	
------	--

靶点信息

研究背景	Glutamate-cysteine ligase, also known as gamma-glutamylcysteine synthetase is the first rate-limiting enzyme of glutathione synthesis. The enzyme consists of two subunits, a heavy catalytic subunit and a light regulatory subunit. This locus encodes the catalytic subunit, while the regulatory subunit is derived from a different gene located on chromosome 1p22-p21. Mutations at this locus have been associated with hemolytic anemia due to deficiency of gamma-glutamylcysteine synthetase and susceptibility to myocardial infarction.
基因ID	2729
基因名	GCLC
Swiss	P48506

别名	GCLC (YD20538)
----	----------------

产品验证



实验步骤

访问官网浏览详情: www.ablybio.cn