

Importin 9 (YD11533) Rabbit mAb

货号: **AYD14232**

产品信息

反应	Human,Mouse
宿主	Rabbit
克隆性	Monoclonal
预测反应	
应用	WB IHC-P FC
推荐浓度	
理论分子量	116kDa
实测分子量	
形式	Liquid
保存条件	Store at -20°C. Avoid freeze / thaw cycles. Buffer: PBS with 0.75% BSA,50% glycerol,pH7.3.
偶联物	Unconjugated
阳性对照	293T,Mouse brain,Mouse lung,Mouse kidney
细胞定位	Cytoplasm, Nucleus
纯化	

抗原信息

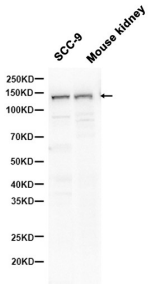
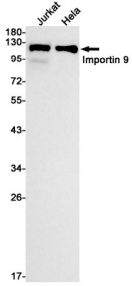
抗原信息	
------	--

靶点信息

研究背景	Functions in nuclear protein import as nuclear transport receptor. Serves as receptor for nuclear localization signals (NLS) in cargo substrates. Is thought to mediate docking of the importin/substrate complex to the nuclear pore complex (NPC) through binding to nucleoporin and the complex is subsequently translocated through the pore by an energy requiring, Ran-dependent mechanism. At the nucleoplasmic side of the NPC, Ran binds to the importin, the importin/substrate complex dissociates and importin is re-exported from the nucleus to the cytoplasm where GTP hydrolysis releases Ran. The directionality of nuclear import is thought to be conferred by an asymmetric distribution of the GTP- and GDP-bound forms of Ran between the cytoplasm and nucleus. Mediates the nuclear import of RPS7, RPL18A, RPL6, histone H2A, histone H2B and histone. Prevents the cytoplasmic aggregation of RPS7 and RPL18A by shielding exposed basic domains. Mediates the nuclear import of actin (By similarity).
基因ID	55705

基因名	IPO9
Swiss	Q96P70
别名	Importin 9 (YD11533)

产品验证



实验步骤

访问官网浏览详情: www.ablybio.cn