

ELOVL5 (YD11231) Rabbit mAb

货号: **AYD14219**

产品信息

| | |
|-------|---|
| 反应 | Human,Mouse,Rat |
| 宿主 | Rabbit |
| 克隆性 | Monoclonal |
| 预测反应 | |
| 应用 | WB ICC/IF FC |
| 推荐浓度 | |
| 理论分子量 | 35kDa |
| 实测分子量 | |
| 形式 | Liquid |
| 保存条件 | Store at -20°C. Avoid freeze / thaw cycles. Buffer: PBS with 0.75% BSA,50% glycerol,pH7.3. |
| 偶联物 | Unconjugated |
| 阳性对照 | HepG2 |
| 细胞定位 | Endoplasmic reticulum membrane, Cell projection, dendrite |
| 纯化 | |

抗原信息

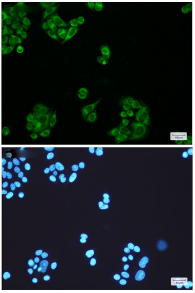
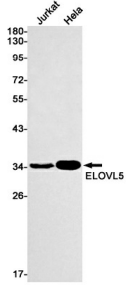
| | |
|------|--|
| 抗原信息 | |
|------|--|

靶点信息

| | |
|-------|---|
| 研究背景 | This gene belongs to the ELO family. It is highly expressed in the adrenal gland and testis, and encodes a multi-pass membrane protein that is localized in the endoplasmic reticulum. This protein is involved in the elongation of long-chain polyunsaturated fatty acids. Mutations in this gene have been associated with spinocerebellar ataxia-38 (SCA38). Alternatively spliced transcript variants have been found for this gene. |
| 基因ID | 60481 |
| 基因名 | ELOVL5 |
| Swiss | Q9NYP7 |

| | |
|----|------------------|
| 别名 | ELOVL5 (YD11231) |
|----|------------------|

产品验证



实验步骤

访问官网浏览详情: www.ablybio.cn