

Mannan Binding Lectin (YD20870) Rabbit mAb

货号: **AYD14211**

产品信息

反应	Human,Mouse
宿主	Rabbit
克隆性	Monoclonal
预测反应	
应用	WB IHC-P
推荐浓度	
理论分子量	26kDa
实测分子量	
形式	Liquid
保存条件	Store at -20°C. Avoid freeze / thaw cycles. Buffer: PBS with 0.75% BSA,50% glycerol,pH7.3.
偶联物	Unconjugated
阳性对照	Mouse serum
细胞定位	Secreted, Cell surface
纯化	

抗原信息

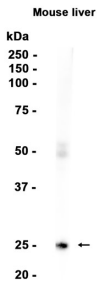
抗原信息	
------	--

靶点信息

研究背景	This gene encodes the soluble mannose-binding lectin or mannose-binding protein found in serum. The protein encoded belongs to the collectin family and is an important element in the innate immune system. The protein recognizes mannose and N-acetylglucosamine on many microorganisms, and is capable of activating the classical complement pathway. Deficiencies of this gene have been associated with susceptibility to autoimmune and infectious diseases.
基因ID	4153
基因名	MBL2
Swiss	P11226

别名	Mannan Binding Lectin (YD20870)
----	---------------------------------

产品验证



实验步骤

访问官网浏览详情: www.ablybio.cn