

BIN1 (YD14449) Rabbit mAb

货号: **AYD14202**

产品信息

反应	Human,Mouse,Rat
宿主	Rabbit
克隆性	Monoclonal
预测反应	
应用	WB IHC-P ICC/IF FC
推荐浓度	
理论分子量	65kDa
实测分子量	
形式	Liquid
保存条件	Store at -20°C. Avoid freeze / thaw cycles. Buffer: PBS with 0.75% BSA,50% glycerol,pH7.3.
偶联物	Unconjugated
阳性对照	Jurkat,HeLa
细胞定位	Nucleus, Cytoplasm, Endosome, Cell membrane, sarcolemma, T-tubule
纯化	

抗原信息

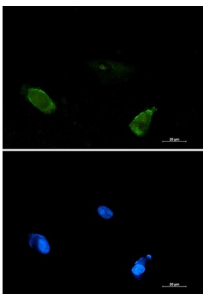
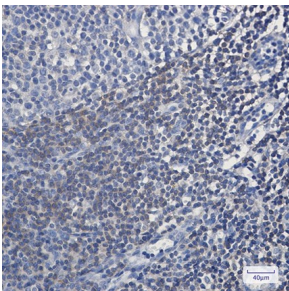
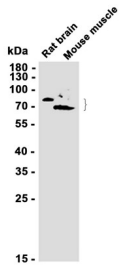
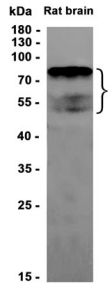
抗原信息	
------	--

靶点信息

研究背景	<p>This gene encodes several isoforms of a nucleocytoplasmic adaptor protein, one of which was initially identified as a MYC-interacting protein with features of a tumor suppressor. Isoforms that are expressed in the central nervous system may be involved in synaptic vesicle endocytosis and may interact with dynamin, synaptojanin, endophilin, and clathrin. Isoforms that are expressed in muscle and ubiquitously expressed isoforms localize to the cytoplasm and nucleus and activate a caspase-independent apoptotic process. Studies in mouse suggest that this gene plays an important role in cardiac muscle development. Alternate splicing of the gene results in several transcript variants encoding different isoforms. Aberrant splice variants expressed in tumor cell lines have also been described.</p>
基因ID	274

基因名	BIN1
Swiss	O00499
别名	BIN1 (YD14449)

产品验证



实验步骤

访问官网浏览详情: www.ablybio.cn