

Protein Phosphatase 1 beta (YD13886) Rabbit mAb

货号: **AYD14193**

产品信息

反应	Human,Mouse,Rat
宿主	Rabbit
克隆性	Monoclonal
预测反应	
应用	WB IHC-P ICC/IF FC IP
推荐浓度	
理论分子量	37kDa
实测分子量	
形式	Liquid
保存条件	Store at -20°C. Avoid freeze / thaw cycles. Buffer: PBS with 0.75% BSA,50% glycerol,pH7.3.
偶联物	Unconjugated
阳性对照	SW480,HL-60,Jurkat,Mouse brain,Rat brain
细胞定位	Cytoplasm, Nucleus, nucleoplasm, nucleolus
纯化	

抗原信息

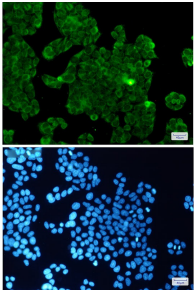
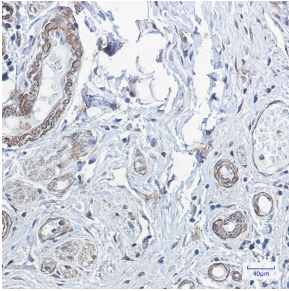
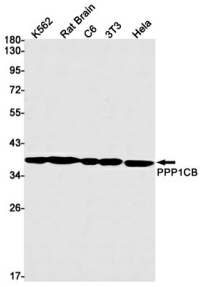
抗原信息	
------	--

靶点信息

研究背景	The protein encoded by this gene is one of the three catalytic subunits of protein phosphatase 1 (PP1). PP1 is a serine/threonine specific protein phosphatase known to be involved in the regulation of a variety of cellular processes, such as cell division, glycogen metabolism, muscle contractility, protein synthesis, and HIV-1 viral transcription. Mouse studies suggest that PP1 functions as a suppressor of learning and memory. Two alternatively spliced transcript variants encoding distinct isoforms have been observed.
基因ID	5500
基因名	PPP1CB

Swiss	P62140
别名	Protein Phosphatase 1 beta (YD13886)

产品验证



实验步骤

访问官网浏览详情: www.ablybio.cn