

# Cip4 (YD13489) Rabbit mAb

货号: **AYD14180**

## 产品信息

反应	Human,Mouse,Rat
宿主	Rabbit
克隆性	Monoclonal
预测反应	
应用	WB IHC-P
推荐浓度	
理论分子量	68kDa
实测分子量	
形式	Liquid
保存条件	Store at -20°C. Avoid freeze / thaw cycles. Buffer: PBS with 0.75% BSA,50% glycerol,pH7.3.
偶联物	Unconjugated
阳性对照	HepG2,HeLa,SKOV3,A673,5637,Mouse kidney,Mouse heart,Mouse lung
细胞定位	Cytoplasm, cytoskeleton, cell cortex, Lysosome, Golgi apparatus, Cell membrane, Cell projection, phagocytic cup, perinuclear region
纯化	

## 抗原信息

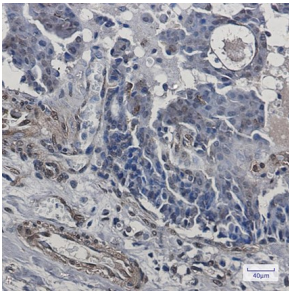
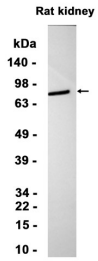
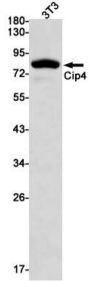
抗原信息	
------	--

## 靶点信息

研究背景	Required for translocation of GLUT4 to the plasma membrane in response to insulin signaling (By similarity). Required to coordinate membrane tubulation with reorganization of the actin cytoskeleton during endocytosis. Binds to lipids such as phosphatidylinositol 4,5-bisphosphate and phosphatidylserine and promotes membrane invagination and the formation of tubules. Also promotes CDC42-induced actin polymerization by recruiting WASL/N-WASP which in turn activates the Arp2/3 complex. Actin polymerization may promote the fission of membrane tubules to form endocytic vesicles. Required for the formation of podosomes, actin-rich adhesion structures specific to monocyte-derived cells. May be required for the lysosomal retention of FASLG/FASL.
基因ID	9322

基因名	TRIP10
Swiss	Q15642
别名	Cip4 (YD13489)

## 产品验证



## 实验步骤

访问官网浏览详情: [www.ablybio.cn](http://www.ablybio.cn)