

Phospho-EEF2 (Thr56/Thr58) (YD32351) Rabbit mAb

货号: **AYD14150**

产品信息

| | |
|-------|---|
| 反应 | Human,Mouse,Rat |
| 宿主 | Rabbit |
| 克隆性 | Monoclonal |
| 预测反应 | |
| 应用 | WB |
| 推荐浓度 | |
| 理论分子量 | 95kDa |
| 实测分子量 | |
| 形式 | Liquid |
| 保存条件 | Store at -20°C. Avoid freeze / thaw cycles. Buffer: PBS with 0.75% BSA,50% glycerol,pH7.3. |
| 偶联物 | Unconjugated |
| 阳性对照 | HeLa,NCI-H460,293T |
| 细胞定位 | Cytoplasm, Nucleus |
| 纯化 | |

抗原信息

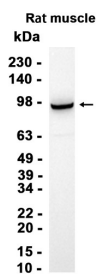
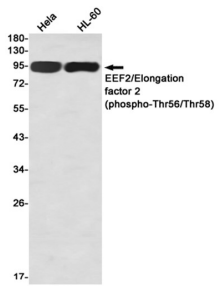
| | |
|------|--|
| 抗原信息 | |
|------|--|

靶点信息

| | |
|------|--|
| 研究背景 | This gene encodes a member of the GTP-binding translation elongation factor family. This protein is an essential factor for protein synthesis. It promotes the GTP-dependent translocation of the nascent protein c hain from the A-site to the P-site of the ribosome. This protein is completely inactivated by EF-2 kinase phosphorylation. |
| 基因ID | 1938 |
| 基因名 | EEF2 |

| | |
|-------|--------------------------------------|
| Swiss | P13639 |
| 别名 | Phospho-EEF2 (Thr56/Thr58) (YD32351) |

产品验证



实验步骤

访问官网浏览详情: www.ablybio.cn