

BRCC36 (YD13825) Rabbit mAb

货号: **AYD14142**

产品信息

反应	Human,Mouse,Rat
宿主	Rabbit
克隆性	Monoclonal
预测反应	
应用	WB FC
推荐浓度	
理论分子量	36kDa
实测分子量	
形式	Liquid
保存条件	Store at -20°C. Avoid freeze / thaw cycles. Buffer: PBS with 0.75% BSA,50% glycerol,pH7.3.
偶联物	Unconjugated
阳性对照	HeLa,MCF7,Jurkat,293T,Mouse liver,Mouse kidney,Mouse brain,Rat liver
细胞定位	Nucleus, Cytoplasm, cytoskeleton, spindle pole
纯化	

抗原信息

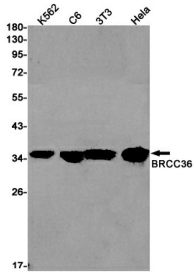
抗原信息	
------	--

靶点信息

研究背景	This gene encodes a subunit of the BRCA1-BRCA2-containing complex (BRCC), which is an E3 ubiquitin ligase. This complex plays a role in the DNA damage response, where it is responsible for the stable accumulation of BRCA1 at DNA break sites. The component encoded by this gene can specifically cleave Lys 63-linked polyubiquitin chains, and it regulates the abundance of these polyubiquitin chains in chromatin. The loss of this gene results in abnormal angiogenesis and is associated with syndromic moyamoya, a cerebrovascular angiopathy. Alternative splicing results in multiple transcript variants. A related pseudogene has been identified on chromosome 5.
基因ID	79184
基因名	BRCC3

Swiss	P46736
别名	BRCC36 (YD13825)

产品验证



实验步骤

访问官网浏览详情: www.ablybio.cn