

CYP1B1 (YD14349) Rabbit mAb

货号: **AYD14044**

产品信息

反应	Human,Mouse,Rat
宿主	Rabbit
克隆性	Monoclonal
预测反应	
应用	WB IHC-P
推荐浓度	
理论分子量	61kDa
实测分子量	
形式	Liquid
保存条件	Store at -20°C. Avoid freeze / thaw cycles. Buffer: PBS with 0.75% BSA,50% glycerol,pH7.3.
偶联物	Unconjugated
阳性对照	A-549,MCF7,HL-60,HT-29,Mouse kidney,Mouse heart,Rat liver
细胞定位	Endoplasmic reticulum membrane, Microsome membrane, Mitochondrion
纯化	

抗原信息

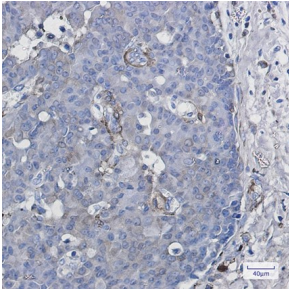
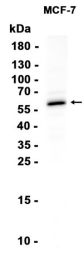
抗原信息	
------	--

靶点信息

研究背景	This gene encodes a member of the cytochrome P450 superfamily of enzymes. The cytochrome P450 proteins are monooxygenases which catalyze many reactions involved in drug metabolism and synthesis of cholesterol, steroids and other lipids. The enzyme encoded by this gene localizes to the endoplasmic reticulum and metabolizes procarcinogens such as polycyclic aromatic hydrocarbons and 17beta-estradiol. Mutations in this gene have been associated with primary congenital glaucoma; therefore it is thought that the enzyme also metabolizes a signaling molecule involved in eye development, possibly a steroid.
基因ID	1545
基因名	CYP1B1

Swiss	Q16678
别名	CYP1B1 (YD14349)

产品验证



实验步骤

访问官网浏览详情: www.ablybio.cn