

GPCR LGR6 (YD20843) Rabbit mAb

货号: **AYD14008**

产品信息

反应	Human,Mouse,Rat
宿主	Rabbit
克隆性	Monoclonal
预测反应	
应用	WB IHC-P ICC/IF FC
推荐浓度	
理论分子量	104kDa
实测分子量	
形式	Liquid
保存条件	Store at -20°C. Avoid freeze / thaw cycles. Buffer: PBS with 0.75% BSA,50% glycerol,pH7.3.
偶联物	Unconjugated
阳性对照	A-549,Raji
细胞定位	Cell membrane
纯化	

抗原信息

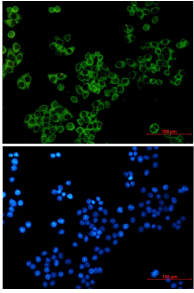
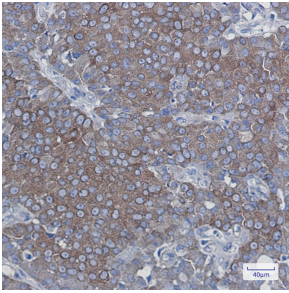
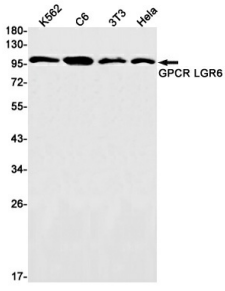
抗原信息	
------	--

靶点信息

研究背景	This gene encodes a member of the leucine-rich repeat-containing subgroup of the G protein-coupled 7-transmembrane protein superfamily. The encoded protein is a glycoprotein hormone receptor with a large N-terminal extracellular domain that contains leucine-rich repeats important for the formation of a horseshoe-shaped interaction motif for ligand binding. Alternative splicing of this gene results in multiple transcript variants.
基因ID	59352
基因名	LGR6
Swiss	Q9HBX8

别名	GPCR LGR6 (YD20843)
----	---------------------

产品验证



实验步骤

访问官网浏览详情: www.ablybio.cn