

CREB (YD14017) Rabbit mAb

货号: **AYD13965**

产品信息

反应	Human,Mouse,Rat
宿主	Rabbit
克隆性	Monoclonal
预测反应	
应用	WB IHC-P
推荐浓度	
理论分子量	35kDa
实测分子量	
形式	Liquid
保存条件	Store at -20°C. Avoid freeze / thaw cycles. Buffer: PBS with 0.75% BSA,50% glycerol,pH7.3.
偶联物	Unconjugated
阳性对照	A-431
细胞定位	Nucleus
纯化	

抗原信息

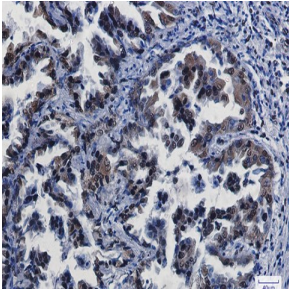
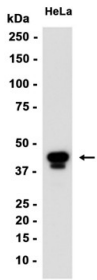
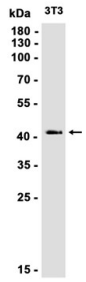
抗原信息	
------	--

靶点信息

研究背景	This gene encodes a transcription factor that is a member of the leucine zipper family of DNA binding proteins. This protein binds as a homodimer to the cAMP-responsive element, an octameric palindrome. The protein is phosphorylated by several protein kinases, and induces transcription of genes in response to hormonal stimulation of the cAMP pathway. Alternate splicing of this gene results in several transcript variants encoding different isoforms.
基因ID	1385
基因名	CREB1
Swiss	P16220

别名	CREB (YD14017)
----	----------------

产品验证



实验步骤

访问官网浏览详情: www.ablybio.cn