

ATG16L1 (YD14867) Rabbit mAb

货号: **AYD13865**

产品信息

反应	Human,Mouse,Rat
宿主	Rabbit
克隆性	Monoclonal
预测反应	
应用	WB IHC-P
推荐浓度	
理论分子量	68kDa
实测分子量	
形式	Liquid
保存条件	Store at -20°C. Avoid freeze / thaw cycles. Buffer: PBS with 0.75% BSA,50% glycerol,pH7.3.
偶联物	Unconjugated
阳性对照	Jurkat,Mouse thymus,Rat thymus
细胞定位	Cytoplasm, Preautophagosomal structure membrane, Endosome membrane, Lysosome membrane
纯化	

抗原信息

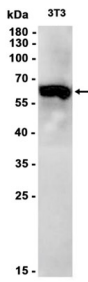
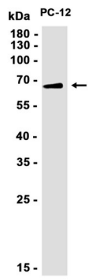
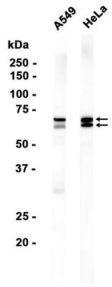
抗原信息	
------	--

靶点信息

研究背景	The protein encoded by this gene is part of a large protein complex that is necessary for autophagy, the major process by which intracellular components are targeted to lysosomes for degradation. Defects in this gene are a cause of susceptibility to inflammatory bowel disease type 10 (IBD10). Several transcript variants encoding different isoforms have been found for this gene.
基因ID	55054
基因名	ATG16L1
Swiss	Q676U5

别名	ATG16L1 (YD14867)
----	-------------------

产品验证



实验步骤

访问官网浏览详情: www.ablybio.cn