

# YWHAE (YD31112) Rabbit mAb

货号: **AYD13861**

## 产品信息

反应	Human,Mouse,Rat
宿主	Rabbit
克隆性	Monoclonal
预测反应	
应用	WB ICC/IF FC
推荐浓度	
理论分子量	29kDa
实测分子量	
形式	Liquid
保存条件	Store at -20°C. Avoid freeze / thaw cycles. Buffer: PBS with 0.75% BSA,50% glycerol,pH7.3.
偶联物	Unconjugated
阳性对照	HeLa,293T,U-251MG,Mouse brain,Mouse kidney,Mouse lung,Rat brain,Rat kidney,Rat lung
细胞定位	Nucleus, Cytoplasm, Melanosome
纯化	

## 抗原信息

抗原信息	
------	--

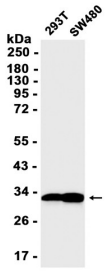
## 靶点信息

研究背景	This gene product belongs to the 14-3-3 family of proteins which mediate signal transduction by binding to phosphoserine-containing proteins. This highly conserved protein family is found in both plants and mammals, and this protein is 100% identical to the mouse ortholog. It interacts with CDC25 phosphatases, RAF1 and IRS1 proteins, suggesting its role in diverse biochemical activities related to signal transduction, such as cell division and regulation of insulin sensitivity. It has also been implicated in the pathogenesis of small cell lung cancer. Two transcript variants, one protein-coding and the other non-protein-coding, have been found for this gene.
基因ID	7531
基因名	YWHAE

Swiss	P62258
别名	YWHAE (YD31112)

### 产品验证

---



### 实验步骤

访问官网浏览详情: [www.ablybio.cn](http://www.ablybio.cn)