

Integrin beta 3 (YD31115) Rabbit mAb

货号: **AYD13857**

产品信息

| | |
|-------|--|
| 反应 | Human,Mouse,Rat |
| 宿主 | Rabbit |
| 克隆性 | Monoclonal |
| 预测反应 | |
| 应用 | WB FC IP |
| 推荐浓度 | |
| 理论分子量 | 87kDa |
| 实测分子量 | |
| 形式 | Liquid |
| 保存条件 | Store at -20°C. Avoid freeze / thaw cycles. Buffer: PBS with 0.75% BSA,50% glycerol,pH7.3. |
| 偶联物 | Unconjugated |
| 阳性对照 | HUVEC,Mouse spleen,Rat lung |
| 细胞定位 | Cell membrane, Cell projection, lamellipodium membrane, Cell junction, focal adhesion, Postsynaptic cell membrane, Synapse |
| 纯化 | |

抗原信息

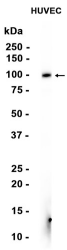
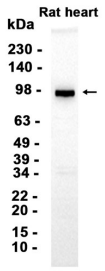
| | |
|------|--|
| 抗原信息 | |
|------|--|

靶点信息

| | |
|-------|--|
| 研究背景 | The ITGB3 protein product is the integrin beta chain beta 3. Integrins are integral cell-surface proteins composed of an alpha chain and a beta chain. A given chain may combine with multiple partners resulting in different integrins. Integrin beta 3 is found along with the alpha IIb chain in platelets. Integrins are known to participate in cell adhesion as well as cell-surface mediated signalling. |
| 基因ID | 3690 |
| 基因名 | ITGB3 |
| Swiss | P05106 |

| | |
|----|---------------------------|
| 别名 | Integrin beta 3 (YD31115) |
|----|---------------------------|

产品验证



实验步骤

访问官网浏览详情: www.ablybio.cn