

Carcino Embryonic Antigen CEA (YD31230) Rabbit mAb

货号: AYD13827

产品信息

反应	Human
宿主	Rabbit
克隆性	Monoclonal
预测反应	
应用	WB IHC-P ICC/IF FC
推荐浓度	
理论分子量	77kDa
实测分子量	
形式	Liquid
保存条件	Store at -20°C. Avoid freeze / thaw cycles. Buffer: PBS with 0.75% BSA,50% glycerol,pH7.3.
偶联物	Unconjugated
阳性对照	HeLa,Mouse pancreas
细胞定位	Cell membrane, Apical cell membrane, Cell surface
纯化	

抗原信息

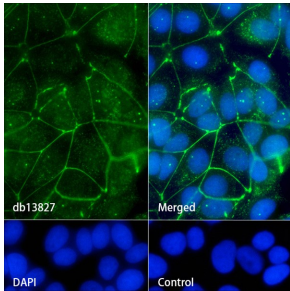
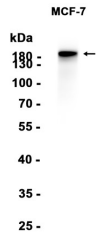
抗原信息	
------	--

靶点信息

研究背景	This gene encodes a cell surface glycoprotein that represents the founding member of the carcinoembryonic antigen (CEA) family of proteins. The encoded protein is used as a clinical biomarker for gastrointestinal cancers and may promote tumor development through its role as a cell adhesion molecule. Additionally, the encoded protein may regulate differentiation, apoptosis, and cell polarity. This gene is present in a CEA family gene cluster on chromosome 19. Alternative splicing results in multiple transcript variants.
基因ID	1048
基因名	CEACAM5

Swiss	P06731
别名	Carcino Embryonic Antigen CEA (YD31230)

产品验证



实验步骤

访问官网浏览详情: www.ablybio.cn