

Eg5 (YD33966) Rabbit mAb

货号: **AYD13798**

产品信息

反应	Human
宿主	Rabbit
克隆性	Monoclonal
预测反应	
应用	WB IHC-P ICC/IF FC IP
推荐浓度	
理论分子量	119kDa
实测分子量	
形式	Liquid
保存条件	Store at -20°C. Avoid freeze / thaw cycles. Buffer: PBS with 0.75% BSA,50% glycerol,pH7.3.
偶联物	Unconjugated
阳性对照	HeLa,Jurkat,SW620
细胞定位	Cytoplasm, cytoskeleton, spindle pole
纯化	

抗原信息

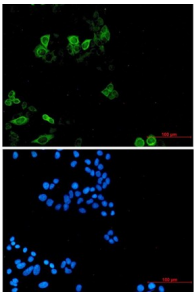
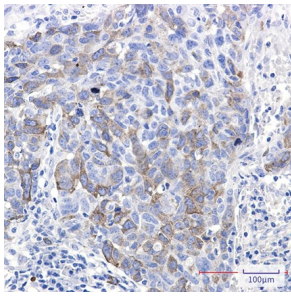
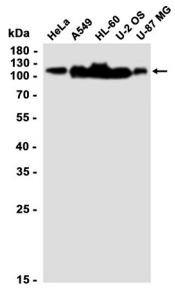
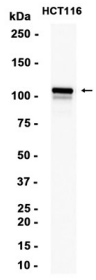
抗原信息	
------	--

靶点信息

研究背景	This gene encodes a motor protein that belongs to the kinesin-like protein family. Members of this protein family are known to be involved in various kinds of spindle dynamics. The function of this gene product includes chromosome positioning, centrosome separation and establishing a bipolar spindle during cell mitosis.
基因ID	3832
基因名	KIF11
Swiss	P52732

别名	Eg5 (YD33966)
----	---------------

产品验证



实验步骤

访问官网浏览详情: www.ablybio.cn