

LRG1 (YD19574) Rabbit mAb

货号: **AYD13760**

产品信息

反应	Human
宿主	Rabbit
克隆性	Monoclonal
预测反应	
应用	WB IHC-P
推荐浓度	
理论分子量	38kDa
实测分子量	
形式	Liquid
保存条件	Store at -20°C. Avoid freeze / thaw cycles. Buffer: PBS with 0.75% BSA,50% glycerol,pH7.3.
偶联物	Unconjugated
阳性对照	Human plasma
细胞定位	Secreted
纯化	

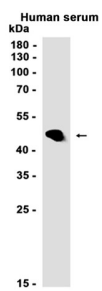
抗原信息

抗原信息	
------	--

靶点信息

研究背景	The leucine-rich repeat (LRR) family of proteins, including LRG1, have been shown to be involved in prote in-protein interaction, signal transduction, and cell adhesion and development. LRG1 is expressed during granulocyte differentiation (O'Donnell et al., 2002 [PubMed 12223515]).
基因ID	116844
基因名	LRG1
Swiss	P02750
别名	LRG1 (YD19574)

产品验证



实验步骤

访问官网浏览详情: www.ablybio.cn