

MHC Class II beta (YD31498) Rabbit mAb

货号: **AYD13750**

产品信息

反应	Human
宿主	Rabbit
克隆性	Monoclonal
预测反应	
应用	WB IHC-P ICC/IF
推荐浓度	
理论分子量	29kDa
实测分子量	
形式	Liquid
保存条件	Store at -20°C. Avoid freeze / thaw cycles. Buffer: PBS with 0.75% BSA,50% glycerol,pH7.3.
偶联物	Unconjugated
阳性对照	Raji,HeLa (negative)
细胞定位	Cell membrane, Endoplasmic reticulum membrane, Golgi apparatus, trans-Golgi network membrane, Endosome membrane, Lysosome membrane
纯化	

抗原信息

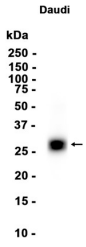
抗原信息	
------	--

靶点信息

研究背景	HLA-DPB belongs to the HLA class II beta chain paralogues. This class II molecule is a heterodimer consisting of an alpha (DPA) and a beta chain (DPB), both anchored in the membrane. It plays a central role in the immune system by presenting peptides derived from extracellular proteins. Class II molecules are expressed in antigen presenting cells (APC: B lymphocytes, dendritic cells, macrophages). The beta chain is approximately 26-28 kDa and its gene contains 6 exons. Exon one encodes the leader peptide, exons 2 and 3 encode the two extracellular domains, exon 4 encodes the transmembrane domain and exon 5 encodes the cytoplasmic tail. Within the DP molecule both the alpha chain and the beta chain contain the polymorphisms specifying the peptide binding specificities, resulting in up to 4 different molecules.
基因ID	3115

基因名	HLA-DPB1
Swiss	P04440
别名	MHC Class II beta (YD31498)

产品验证



实验步骤

访问官网浏览详情: www.ablybio.cn