

smooth muscle Myosin heavy chain 11 (YD31633) Rabbit mAb

货号: AYD13688

产品信息

反应	Human,Mouse
宿主	Rabbit
克隆性	Monoclonal
预测反应	
应用	WB IHC-P
推荐浓度	
理论分子量	227kDa
实测分子量	
形式	Liquid
保存条件	Store at -20°C. Avoid freeze / thaw cycles. Buffer: PBS with 0.75% BSA,50% glycerol,pH7.3.
偶联物	Unconjugated
阳性对照	Mouse uterus,Rat stomach
细胞定位	Melanosome
纯化	

抗原信息

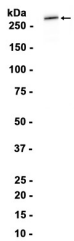
抗原信息	
------	--

靶点信息

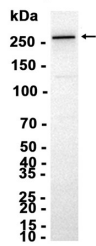
研究背景	The protein encoded by this gene is a smooth muscle myosin belonging to the myosin heavy chain family . The gene product is a subunit of a hexameric protein that consists of two heavy chain subunits and two pairs of non-identical light chain subunits. It functions as a major contractile protein, converting chemical energy into mechanical energy through the hydrolysis of ATP. The gene encoding a human ortholog of rat NUDE1 is transcribed from the reverse strand of this gene, and its 3' end overlaps with that of the latter. The pericentric inversion of chromosome 16 [inv(16)(p13q22)] produces a chimeric transcript that encodes a protein consisting of the first 165 residues from the N terminus of core-binding factor beta in a fusion with the C-terminal portion of the smooth muscle myosin heavy chain. This chromosomal rearrangement is associated with acute myeloid leukemia of the M4Eo subtype. Alternative splicing generates isoforms that are differentially expressed, with ratios changing during muscle cell maturation. Alternatively spliced transcript variants encoding different isoforms have been identified.
基因ID	4629
基因名	MYH11
Swiss	P35749
别名	smooth muscle Myosin heavy chain 11 (YD31633)

产品验证

Mouse spleen



Rat spleen



实验步骤

访问官网浏览详情: www.ablybio.cn