

TOMM20 (YD13969) Rabbit mAb

货号: **AYD13668**

产品信息

反应	Human,Mouse,Rat
宿主	Rabbit
克隆性	Monoclonal
预测反应	
应用	WB IHC-P ICC/IF FC
推荐浓度	
理论分子量	16kDa
实测分子量	
形式	Liquid
保存条件	Store at -20°C. Avoid freeze / thaw cycles. Buffer: PBS with 0.75% BSA,50% glycerol,pH7.3.
偶联物	Unconjugated
阳性对照	293F
细胞定位	Mitochondrion outer membrane
纯化	

抗原信息

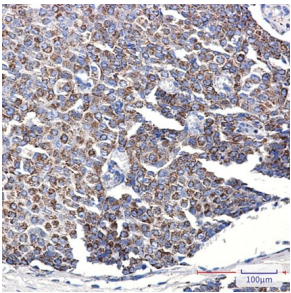
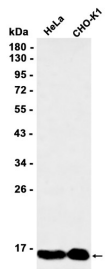
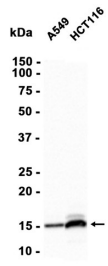
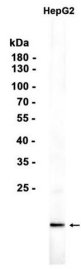
抗原信息	
------	--

靶点信息

研究背景	Central component of the receptor complex responsible for the recognition and translocation of cytosolically synthesized mitochondrial preproteins. Together with TOM22 functions as the transit peptide receptor at the surface of the mitochondrion outer membrane and facilitates the movement of preproteins into the TOM40 translocation pore (By similarity. Required for the translocation across the mitochondrial outer membrane of cytochrome P450 monooxygenases.
基因ID	9804
基因名	TOMM20
Swiss	Q15388

别名	TOMM20 (YD13969)
----	------------------

产品验证



实验步骤

访问官网浏览详情: www.ablybio.cn