

# LATS1/WARTS (YD31958) Rabbit mAb

货号: **AYD13619**

## 产品信息

反应	Human,Mouse,Rat
宿主	Rabbit
克隆性	Monoclonal
预测反应	
应用	WB FC
推荐浓度	
理论分子量	127kDa
实测分子量	
形式	Liquid
保存条件	Store at -20°C. Avoid freeze / thaw cycles. Buffer: PBS with 0.75% BSA,50% glycerol,pH7.3.
偶联物	Unconjugated
阳性对照	HeLa,C2C12
细胞定位	Cytoplasm, cytoskeleton, microtubule organizing center, centrosome, spindle, Midbody, spindle pole body
纯化	

## 抗原信息

抗原信息	
------	--

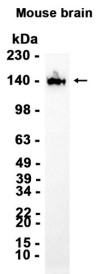
## 靶点信息

研究背景	<p>The protein encoded by this gene is a putative serine/threonine kinase that localizes to the mitotic apparatus and complexes with cell cycle controller CDC2 kinase in early mitosis. The protein is phosphorylated in a cell-cycle dependent manner, with late prophase phosphorylation remaining through metaphase. The N-terminal region of the protein binds CDC2 to form a complex showing reduced H1 histone kinase activity, indicating a role as a negative regulator of CDC2/cyclin A. In addition, the C-terminal kinase domain binds to its own N-terminal region, suggesting potential negative regulation through interference with complex formation via intramolecular binding. Biochemical and genetic data suggest a role as a tumor suppressor. This is supported by studies in knockout mice showing development of soft-tissue sarcomas, ovarian stromal cell tumors and a high sensitivity to carcinogenic treatments.</p>
基因ID	9113

基因名	LATS1
Swiss	O95835
别名	LATS1/WARTS (YD31958)

## 产品验证

---



## 实验步骤

访问官网浏览详情: [www.ablybio.cn](http://www.ablybio.cn)