

# Integrin beta 3 (YD15424) Rabbit mAb

货号: **AYD13573**

## 产品信息

反应	Human,Mouse,Rat
宿主	Rabbit
克隆性	Monoclonal
预测反应	
应用	WB IHC-P
推荐浓度	
理论分子量	87kDa
实测分子量	
形式	Liquid
保存条件	Store at -20°C. Avoid freeze / thaw cycles. Buffer: PBS with 0.75% BSA,50% glycerol,pH7.3.
偶联物	Unconjugated
阳性对照	HUVEC,Mouse spleen,Rat lung
细胞定位	Cell membrane, Cell projection, lamellipodium membrane, Cell junction, focal adhesion, Postsynaptic cell membrane, Synapse
纯化	

## 抗原信息

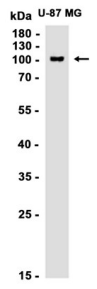
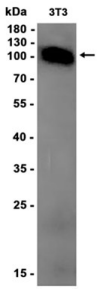
抗原信息	
------	--

## 靶点信息

研究背景	The ITGB3 protein product is the integrin beta chain beta 3. Integrins are integral cell-surface proteins composed of an alpha chain and a beta chain. A given chain may combine with multiple partners resulting in different integrins. Integrin beta 3 is found along with the alpha IIb chain in platelets. Integrins are known to participate in cell adhesion as well as cell-surface mediated signalling.
基因ID	3690
基因名	ITGB3
Swiss	P05106

别名	Integrin beta 3 (YD15424)
----	---------------------------

### 产品验证



### 实验步骤

访问官网浏览详情: [www.ablybio.cn](http://www.ablybio.cn)