

# Oligodendrocyte Specific Protein (YD32127) Rabbit mAb

货号: **AYD13570**

## 产品信息

反应	Human,Mouse,Rat
宿主	Rabbit
克隆性	Monoclonal
预测反应	
应用	<a href="#">WB</a> <a href="#">FC</a>
推荐浓度	
理论分子量	22kDa
实测分子量	
形式	Liquid
保存条件	Store at -20°C. Avoid freeze / thaw cycles. Buffer: PBS with 0.75% BSA,50% glycerol,pH7.3.
偶联物	Unconjugated
阳性对照	U-87MG,HepG2,SH-SY5Y,Mouse placenta
细胞定位	Cell junction, tight junction, Cell membrane
纯化	

## 抗原信息

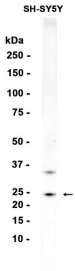
抗原信息	
------	--

## 靶点信息

研究背景	<p>This gene encodes a member of the claudin family. Claudins are integral membrane proteins and components of tight junction strands. Tight junction strands serve as a physical barrier to prevent solutes and water from passing freely through the paracellular space between epithelial or endothelial cell sheets, and also play critical roles in maintaining cell polarity and signal transductions. The protein encoded by this gene is a major component of central nervous system (CNS) myelin and plays an important role in regulating proliferation and migration of oligodendrocytes. Mouse studies showed that the gene deficiency results in deafness and loss of the Sertoli cell epithelial phenotype in the testis. This protein is a tight junction protein at the human blood-testis barrier (BTB), and the BTB disruption is related to a dysfunction of this gene. Alternatively spliced transcript variants encoding different isoforms have been identified.</p>
------	--

基因ID	5010
基因名	CLDN11
Swiss	O75508
别名	Oligodendrocyte Specific Protein (YD32127)

## 产品验证



## 实验步骤

访问官网浏览详情: [www.ablybio.cn](http://www.ablybio.cn)