

# Endo G (YD32129) Rabbit mAb

货号: **AYD13569**

## 产品信息

反应	Human,Mouse,Rat
宿主	Rabbit
克隆性	Monoclonal
预测反应	
应用	WB
推荐浓度	
理论分子量	33kDa
实测分子量	
形式	Liquid
保存条件	Store at -20°C. Avoid freeze / thaw cycles. Buffer: PBS with 0.75% BSA,50% glycerol,pH7.3.
偶联物	Unconjugated
阳性对照	HeLa,MCF7,SW620,Mouse heart,Mouse kidney,Rat heart
细胞定位	Mitochondrion
纯化	

## 抗原信息

抗原信息	
------	--

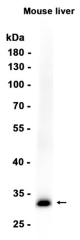
## 靶点信息

研究背景	The protein encoded by this gene is a nuclear encoded endonuclease that is localized in the mitochondrion. The encoded protein is widely distributed among animals and cleaves DNA at GC tracts. This protein is capable of generating the RNA primers required by DNA polymerase gamma to initiate replication of mitochondrial DNA.
基因ID	2021
基因名	ENDOG
Swiss	Q14249

别名	Endo G (YD32129)
----	------------------

## 产品验证

---



## 实验步骤

访问官网浏览详情: [www.ablybio.cn](http://www.ablybio.cn)