

ERp18 (YD32212) Rabbit mAb

货号: **AYD13545**

产品信息

反应	Human,Mouse,Rat
宿主	Rabbit
克隆性	Monoclonal
预测反应	
应用	WB IHC-P ICC/IF
推荐浓度	
理论分子量	19kDa
实测分子量	
形式	Liquid
保存条件	Store at -20°C. Avoid freeze / thaw cycles. Buffer: PBS with 0.75% BSA,50% glycerol,pH7.3.
偶联物	Unconjugated
阳性对照	U-251MG,293T,HepG2,Mouse brain,Mouse heart,Mouse kidney
细胞定位	Endoplasmic reticulum lumen
纯化	

抗原信息

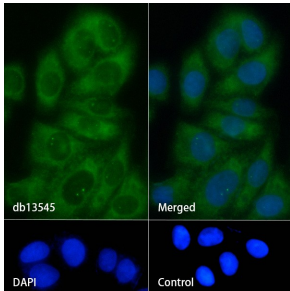
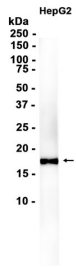
抗原信息	
------	--

靶点信息

研究背景	This gene encodes a member of the thioredoxin superfamily. Members of this family are characterized by a conserved active motif called the thioredoxin fold that catalyzes disulfide bond formation and isomerization. This protein localizes to the endoplasmic reticulum and has a single atypical active motif. The encoded protein is mainly involved in catalyzing native disulfide bond formation and displays activity similar to protein-disulfide isomerases. This protein may play a role in defense against endoplasmic reticulum stresses. Alternate splicing results in both coding and non-coding variants.
基因ID	51060
基因名	TXNDC12

Swiss	O95881
别名	ERp18 (YD32212)

产品验证



实验步骤

访问官网浏览详情: www.ablybio.cn