

# RAB10 (YD16515) Rabbit mAb

货号: **AYD13508**

## 产品信息

|       |   |
|-------|---|
| 反应    | Human,Mouse,Rat   |
| 宿主    | Rabbit  |
| 克隆性   | Monoclonal  |
| 预测反应  |   |
| 应用    | WB ICC/IF FC IP   |
| 推荐浓度  |   |
| 理论分子量 | 23kDa   |
| 实测分子量 |   |
| 形式    | Liquid  |
| 保存条件  | Store at -20°C. Avoid freeze / thaw cycles.<br>Buffer: PBS with 0.75% BSA,50% glycerol,pH7.3.   |
| 偶联物   | Unconjugated  |
| 阳性对照  | NIH/3T3   |
| 细胞定位  | Cytoplasmic vesicle membrane, Golgi apparatus membrane, Golgi apparatus, trans-Golgi network membrane, Endosome membrane, Recycling endosome membrane, Cytoplasmic vesicle, phagosome membrane, Cytoplasm, cytoskeleton, cilium basal body, Endoplasmic reticulum membrane, perinuclear region, Lyso some |
| 纯化    |   |

## 抗原信息

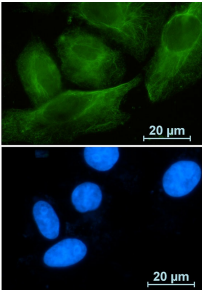
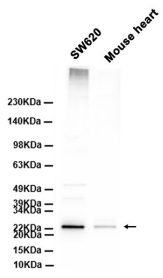
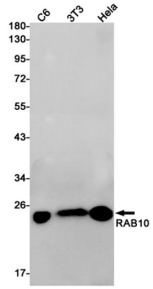
|      |  |
|------|--|
| 抗原信息 |  |
|------|--|

## 靶点信息

|      |  |
|------|--|
| 研究背景 | RAB10 belongs to the RAS (see HRAS; MIM 190020) superfamily of small GTPases. RAB proteins localize to exocytic and endocytic compartments and regulate intracellular vesicle trafficking (Bao et al., 1998 [PubMed 9918381]).[supplied by OMIM, Mar 2009] |
| 基因ID | 10890  |
| 基因名  | RAB10  |

|       |                 |
|-------|-----------------|
| Swiss | P61026          |
| 别名    | RAB10 (YD16515) |

### 产品验证



### 实验步骤

访问官网浏览详情: [www.ablybio.cn](http://www.ablybio.cn)