

ELMO1 (YD14185) Rabbit mAb

货号: **AYD13503**

产品信息

反应	Human,Mouse,Rat
宿主	Rabbit
克隆性	Monoclonal
预测反应	
应用	WB ICC/IF FC IP
推荐浓度	
理论分子量	84kDa
实测分子量	
形式	Liquid
保存条件	Store at -20°C. Avoid freeze / thaw cycles. Buffer: PBS with 0.75% BSA,50% glycerol,pH7.3.
偶联物	Unconjugated
阳性对照	Raji,SH-SY5Y,Mouse lung,Mouse brain,Rat brain
细胞定位	Cytoplasm, Cell membrane
纯化	

抗原信息

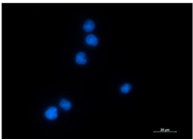
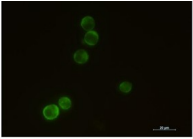
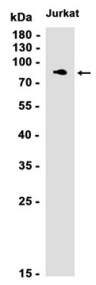
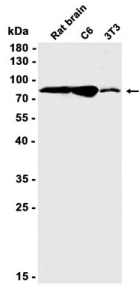
抗原信息	
------	--

靶点信息

研究背景	This gene encodes a member of the engulfment and cell motility protein family. These proteins interact with a subfamily of cytokinesis proteins to promote phagocytosis and cell migration. Increased expression of this gene and dedicator of cytokinesis 1 may promote glioma cell invasion, and single nucleotide polymorphisms in this gene may be associated with diabetic nephropathy. Alternative splicing results in multiple transcript variants. [provided by RefSeq, Aug 2013]
基因ID	9844
基因名	ELMO1
Swiss	Q92556

别名	ELMO1 (YD14185)
----	-----------------

产品验证



实验步骤

访问官网浏览详情: www.ablybio.cn