

PPP2CA/B (YD13088) Rabbit mAb

货号: **AYD13474**

产品信息

反应	Human,Mouse,Rat
宿主	Rabbit
克隆性	Monoclonal
预测反应	
应用	WB IHC-P FC
推荐浓度	
理论分子量	36kDa
实测分子量	
形式	Liquid
保存条件	Store at -20°C. Avoid freeze / thaw cycles. Buffer: PBS with 0.75% BSA,50% glycerol,pH7.3.
偶联物	Unconjugated
阳性对照	HeLa,293T,NIH/3T3,Rat brain
细胞定位	Cytoplasm, Nucleus, Chromosome, centromere, cytoskeleton, spindle pole
纯化	

抗原信息

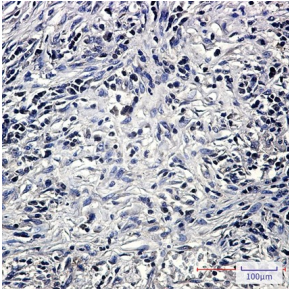
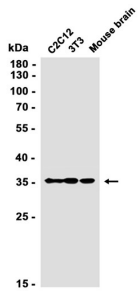
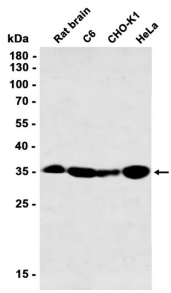
抗原信息	
------	--

靶点信息

研究背景	This gene encodes the phosphatase 2A catalytic subunit. Protein phosphatase 2A is one of the four major Ser/Thr phosphatases, and it is implicated in the negative control of cell growth and division. It consists of a common heteromeric core enzyme, which is composed of a catalytic subunit and a constant regulatory subunit, that associates with a variety of regulatory subunits. This gene encodes an alpha isoform of the catalytic subunit.
基因ID	5515
基因名	PPP2CA
Swiss	P67775

别名	PPP2CA/B (YD13088)
----	--------------------

产品验证



实验步骤

访问官网浏览详情: www.ablybio.cn