

Lactate Dehydrogenase (YD13847) Rabbit mAb

货号: **AYD13467**

产品信息

反应	Human,Mouse,Rat
宿主	Rabbit
克隆性	Monoclonal
预测反应	
应用	WB IHC-P ICC/IF FC IP
推荐浓度	
理论分子量	37kDa/37kDa/36kDa
实测分子量	
形式	Liquid
保存条件	Store at -20°C. Avoid freeze / thaw cycles. Buffer: PBS with 0.75% BSA,50% glycerol,pH7.3.
偶联物	Unconjugated
阳性对照	
细胞定位	Cytoplasm, Mitochondrion inner membrane
纯化	

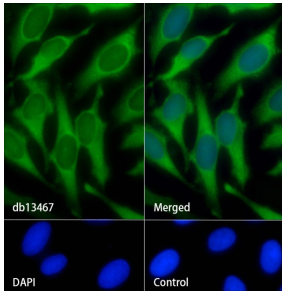
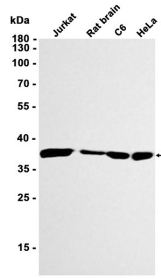
抗原信息

抗原信息	
------	--

靶点信息

研究背景	Interconverts simultaneously and stereospecifically pyruvate and lactate with concomitant interconversion of NADH and NAD(+) Interconverts simultaneously and stereospecifically pyruvate and lactate with concomitant interconversion of NADH and NAD(+) Possible role in sperm motility
基因ID	3939, 3945, 3948
基因名	LDHA, LDHB, LDHC
Swiss	P00338, P07195, P07864
别名	Lactate Dehydrogenase (YD13847)

产品验证



实验步骤

访问官网浏览详情: www.ablybio.cn