

Cathepsin S (YD32622) Rabbit mAb

货号: **AYD13417**

产品信息

反应	Human
宿主	Rabbit
克隆性	Monoclonal
预测反应	
应用	WB IHC-P
推荐浓度	
理论分子量	37kDa
实测分子量	
形式	Liquid
保存条件	Store at -20°C. Avoid freeze / thaw cycles. Buffer: PBS with 0.75% BSA,50% glycerol,pH7.3.
偶联物	Unconjugated
阳性对照	THP-1,HL-60,HepG2,Mouse liver,Rat brain
细胞定位	Lysosome, Secreted, Cytoplasmic vesicle, phagosome
纯化	

抗原信息

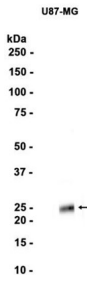
抗原信息	
------	--

靶点信息

研究背景	The protein encoded by this gene, a member of the peptidase C1 family, is a lysosomal cysteine proteinase that may participate in the degradation of antigenic proteins to peptides for presentation on MHC class II molecules. The encoded protein can function as an elastase over a broad pH range in alveolar macrophages. Alternatively spliced transcript variants encoding distinct isoforms have been found for this gene.
基因ID	1520
基因名	CTSS
Swiss	P25774

别名	Cathepsin S (YD32622)
----	-----------------------

产品验证



实验步骤

访问官网浏览详情: www.ablybio.cn