

Phospho-PKC delta (Ser299) (YD34252) Rabbit mAb

货号: **AYD13415**

产品信息

反应	Human
宿主	Rabbit
克隆性	Monoclonal
预测反应	
应用	WB IHC-P
推荐浓度	
理论分子量	78kDa
实测分子量	
形式	Liquid
保存条件	Store at -20°C. Avoid freeze / thaw cycles. Buffer: PBS with 0.75% BSA,50% glycerol,pH7.3.
偶联物	Unconjugated
阳性对照	MCF7,Mouse testis
细胞定位	Cytoplasm, perinuclear region, Nucleus, Cell membrane, Mitochondrion, Endomembrane system
纯化	

抗原信息

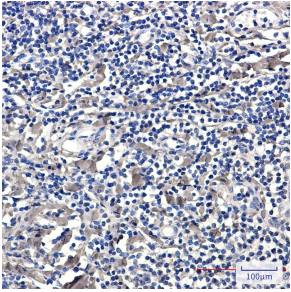
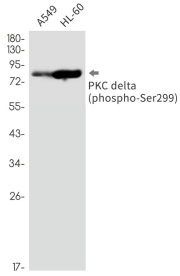
抗原信息	
------	--

靶点信息

研究背景	Protein kinase C (PKC) is a family of serine- and threonine-specific protein kinases that can be activated by calcium and the second messenger diacylglycerol. PKC family members phosphorylate a wide variety of protein targets and are known to be involved in diverse cellular signaling pathways. PKC family members also serve as major receptors for phorbol esters, a class of tumor promoters. Each member of the PKC family has a specific expression profile and is believed to play distinct roles in cells. The protein encoded by this gene is one of the PKC family members. Studies both in human and mice demonstrate that this kinase is involved in B cell signaling and in the regulation of growth, apoptosis, and differentiation of a variety of cell types. Alternatively spliced transcript variants encoding the same protein have been observed.
基因ID	5580

基因名	PRKCD
Swiss	Q05655
别名	Phospho-PKC delta (Ser299) (YD34252)

产品验证



实验步骤

访问官网浏览详情: www.ablybio.cn