

Phospho-Tau (Ser202) (YD12876) Rabbit mAb

货号: **AYD13380**

产品信息

反应	Human,Mouse,Rat
宿主	Rabbit
克隆性	Monoclonal
预测反应	
应用	WB
推荐浓度	
理论分子量	79kDa
实测分子量	
形式	Liquid
保存条件	Store at -20°C. Avoid freeze / thaw cycles. Buffer: PBS with 0.75% BSA,50% glycerol,pH7.3.
偶联物	Unconjugated
阳性对照	SH-SY5Y,C6
细胞定位	Cytoplasm, cytosol, Cell membrane, cytoskeleton, Cell projection, axon, dendrite, Secreted
纯化	

抗原信息

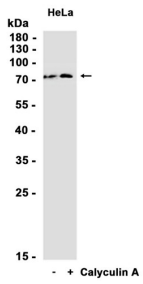
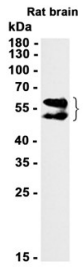
抗原信息	
------	--

靶点信息

研究背景	This gene encodes the microtubule-associated protein tau (MAPT) whose transcript undergoes complex, regulated alternative splicing, giving rise to several mRNA species. MAPT transcripts are differentially expressed in the nervous system, depending on stage of neuronal maturation and neuron type. MAPT gene mutations have been associated with several neurodegenerative disorders such as Alzheimer's disease, Pick's disease, frontotemporal dementia, cortico-basal degeneration and progressive supranuclear palsy.
基因ID	4137
基因名	MAPT
Swiss	P10636

别名	Phospho-Tau (Ser202) (YD12876)
----	--------------------------------

产品验证



实验步骤

访问官网浏览详情: www.ablybio.cn