

CRMP1 (YD32767) Rabbit mAb

货号: **AYD13369**

产品信息

反应	Human,Mouse,Rat
宿主	Rabbit
克隆性	Monoclonal
预测反应	
应用	WB IHC-P ICC/IF FC IP
推荐浓度	
理论分子量	62kDa
实测分子量	
形式	Liquid
保存条件	Store at -20°C. Avoid freeze / thaw cycles. Buffer: PBS with 0.75% BSA,50% glycerol,pH7.3.
偶联物	Unconjugated
阳性对照	Rat brain
细胞定位	Cytoplasm, cytoskeleton, microtubule organizing center, centrosome, spindle, Cell projection, growth cone, Perikaryon
纯化	

抗原信息

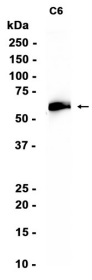
抗原信息	
------	--

靶点信息

研究背景	This gene encodes a member of a family of cytosolic phosphoproteins expressed exclusively in the nervous system. The encoded protein is thought to be a part of the semaphorin signal transduction pathway implicated in semaphorin-induced growth cone collapse during neural development. Alternative splicing results in multiple transcript variants.
基因ID	1400
基因名	CRMP1
Swiss	Q14194

别名	CRMP1 (YD32767)
----	-----------------

产品验证



实验步骤

访问官网浏览详情: www.ablybio.cn