

# Epsin 1 (YD12935) Rabbit mAb

货号: **AYD13333**

## 产品信息

反应	Human,Mouse,Rat
宿主	Rabbit
克隆性	Monoclonal
预测反应	
应用	WB ICC/IF
推荐浓度	
理论分子量	60kDa
实测分子量	
形式	Liquid
保存条件	Store at -20°C. Avoid freeze / thaw cycles. Buffer: PBS with 0.75% BSA,50% glycerol,pH7.3.
偶联物	Unconjugated
阳性对照	U-87MG,Mouse lung,Mouse liver,Mouse kidney,Rat testis,Rat brain
细胞定位	Cytoplasm, Cell membrane, Nucleus, Membrane, clathrin-coated pit
纯化	

## 抗原信息

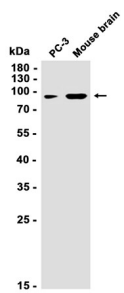
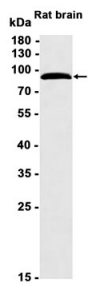
抗原信息	
------	--

## 靶点信息

研究背景	This gene encodes a member of the epsin protein family. The encoded protein binds clathrin and is involved in the endocytosis of clathrin-coated vesicles. Loss of function of this gene is associated with reduced tumor growth and progression in certain cancer types. [provided by RefSeq, Mar 2016]
基因ID	29924
基因名	EPN1
Swiss	Q9Y6I3
别名	Epsin 1 (YD12935)

## 产品验证

---



## 实验步骤

访问官网浏览详情: [www.ablybio.cn](http://www.ablybio.cn)