

Glutathione Reductase (YD19406) Rabbit mAb

货号: **AYD13321**

产品信息

反应	Human
宿主	Rabbit
克隆性	Monoclonal
预测反应	
应用	WB ICC/IF FC
推荐浓度	
理论分子量	56kDa
实测分子量	
形式	Liquid
保存条件	Store at -20°C. Avoid freeze / thaw cycles. Buffer: PBS with 0.75% BSA,50% glycerol,pH7.3.
偶联物	Unconjugated
阳性对照	LO2,HeLa,A-549,Jurkat,Mouse brain,Mouse heart,Mouse kidney
细胞定位	Mitochondrion, Cytoplasm
纯化	

抗原信息

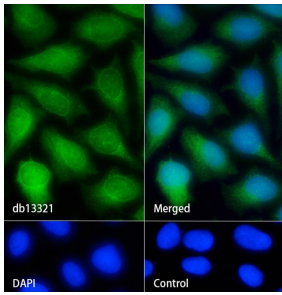
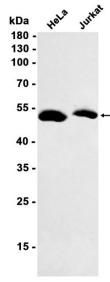
抗原信息	
------	--

靶点信息

研究背景	This gene encodes a member of the class-I pyridine nucleotide-disulfide oxidoreductase family. This enzyme is a homodimeric flavoprotein. It is a central enzyme of cellular antioxidant defense, and reduces oxidized glutathione disulfide (GSSG) to the sulfhydryl form GSH, which is an important cellular antioxidant. R are mutations in this gene result in hereditary glutathione reductase deficiency. Multiple alternatively spliced transcript variants encoding different isoforms have been found.
基因ID	2936
基因名	GSR
Swiss	P00390

别名	Glutathione Reductase (YD19406)
----	---------------------------------

产品验证



实验步骤

访问官网浏览详情: www.ablybio.cn