

Sonic Hedgehog (YD14578) Rabbit mAb

货号: **AYD13299**

产品信息

| | |
|-------|---|
| 反应 | Human |
| 宿主 | Rabbit |
| 克隆性 | Monoclonal |
| 预测反应 | |
| 应用 | WB IHC-P ICC/IF FC |
| 推荐浓度 | |
| 理论分子量 | 50kDa |
| 实测分子量 | |
| 形式 | Liquid |
| 保存条件 | Store at -20°C. Avoid freeze / thaw cycles. Buffer: PBS with 0.75% BSA,50% glycerol,pH7.3. |
| 偶联物 | Unconjugated |
| 阳性对照 | HeLa,HepG2,Rat lung |
| 细胞定位 | Endoplasmic reticulum membrane, Golgi apparatus membrane, Secreted, Cell membrane |
| 纯化 | |

抗原信息

| | |
|------|--|
| 抗原信息 | |
|------|--|

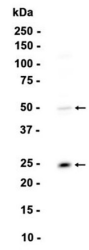
靶点信息

| | |
|------|--|
| 研究背景 | <p>This gene encodes a protein that is instrumental in patterning the early embryo. It has been implicated as the key inductive signal in patterning of the ventral neural tube, the anterior-posterior limb axis, and the ventral somites. Of three human proteins showing sequence and functional similarity to the sonic hedgehog protein of Drosophila, this protein is the most similar. The protein is made as a precursor that is autocatalytically cleaved; the N-terminal portion is soluble and contains the signalling activity while the C-terminal portion is involved in precursor processing. More importantly, the C-terminal product covalently attaches a cholesterol moiety to the N-terminal product, restricting the N-terminal product to the cell surface and preventing it from freely diffusing throughout the developing embryo. Defects in this protein or in its signalling pathway are a cause of holoprosencephaly (HPE). It is also thought that mutations in this gene or in its signalling pathway may be responsible for VACTERL syndrome. Additionally, mutations in a long range enhancer located approximately 1 megabase upstream of this gene disrupt limb patterning and can result in preaxial polydactyly.</p> |
|------|--|

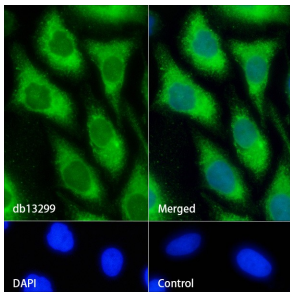
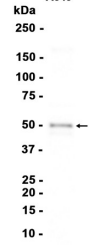
| | |
|-------|--------------------------|
| 基因ID | 6469 |
| 基因名 | SHH |
| Swiss | Q15465 |
| 别名 | Sonic Hedgehog (YD14578) |

产品验证

Human fetal kidney



A549



实验步骤

访问官网浏览详情: www.ablybio.cn