

BACE1 (YD16149) Rabbit mAb

货号: **AYD13283**

产品信息

反应	Human,Mouse,Rat
宿主	Rabbit
克隆性	Monoclonal
预测反应	
应用	WB IHC-P IP
推荐浓度	
理论分子量	56kDa
实测分子量	
形式	Liquid
保存条件	Store at -20°C. Avoid freeze / thaw cycles. Buffer: PBS with 0.75% BSA,50% glycerol,pH7.3.
偶联物	Unconjugated
阳性对照	
细胞定位	Cell membrane, Golgi apparatus, trans-Golgi network, Endoplasmic reticulum, Endosome, Late endosome, Early endosome, Cell surface, Cytoplasmic vesicle membrane, Membrane raft, Lysosome, Recycling endosome, Cell projection, axon, dendrite
纯化	

抗原信息

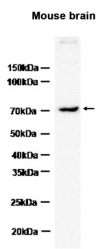
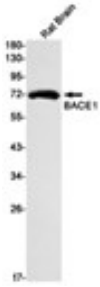
抗原信息	
------	--

靶点信息

研究背景	Responsible for the proteolytic processing of the amyloid precursor protein (APP) (PubMed:29325091). Cleaves at the N-terminus of the A-beta peptide sequence, between residues 671 and 672 of APP, leads to the generation and extracellular release of beta-cleaved soluble APP, and a corresponding cell-associated C-terminal fragment which is later released by gamma-secretase (PubMed:29325091). Cleaves CHL1 (PubMed:29325091)
基因ID	3134
基因名	Bace1

Swiss	P56818
别名	BACE1 (YD16149)

产品验证



实验步骤

访问官网浏览详情: www.ablybio.cn