

— ABLYBIO, Help Your Research



alpha Tubulin (YD14189) Rabbit mAb

货号: **AYD13212**

产品信息

反应	Human, Mouse, Rat
宿主	Rabbit
克隆性	Monoclonal
预测反应	
应用	WB IHC ICC/IF FC
推荐浓度	
理论分子量	50kDa
实测分子量	
形式	Liquid
保存条件	Store at -20°C. Avoid freeze / thaw cycles. Buffer: PBS with 0.75% BSA,50% glycerol,pH7.3.
偶联物	Unconjugated
阳性对照	HeLa,HepG2,MCF7,PC-12,Mouse heart,Mouse brain
细胞定位	Cytoplasm, cytoskeleton
纯化	亲和纯化

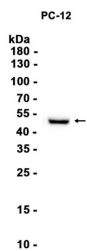
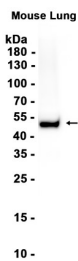
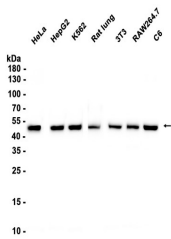
抗原信息

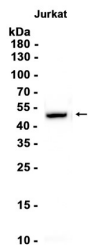
抗原信息	
------	--

靶点信息

研究背景	Microtubules of the eukaryotic cytoskeleton perform essential and diverse functions and are composed of a heterodimer of alpha and beta tubulin. The genes encoding these microtubule constituents are part of the tubulin superfamily, which is composed of six distinct families. Genes from the alpha, beta and gamma tubulin families are found in all eukaryotes. The alpha and beta tubulins represent the major components of microtubules, while gamma tubulin plays a critical role in the nucleation of microtubule assembly. There are multiple alpha and beta tubulin genes and they are highly conserved among and between species. This gene encodes an alpha tubulin that is a highly conserved homolog of a rat testis-specific alpha tubulin. Alternatively spliced transcript variants encoding different isoforms have been found for this gene.
基因ID	7277
基因名	TUBA4A
Swiss	P68366 (https://www.uniprot.org/uniprotkb/P68366/entry)
别名	alpha Tubulin (YD14189),alpha Tubulin (YD14189) Rabbit mAb,TUBA4A,Alpha-tubulin 1,Testis-specific alpha-tubulin,Tubulin H2-alpha,Tubulin alpha-1 chain,TUBA1

产品验证





实验步骤

访问官网浏览详情: www.ablybio.cn (<https://www.ablybio.cn/www.ablybio.cn>)